



DHARMA REALM BUDDHIST UNIVERSITY

Spring 2012
Semester Course Schedule
Ukiah and Berkeley Campuses

REGISTRATION

Ukiah Registration	Jan 17 - 21
Ukiah Classes	Jan 17
Berkeley Registration	Jan 17 - 21
Berkeley Classes	Jan 17

How do I register for classes?

In Ukiah, registration will take place at the DRBU Administrative Office in the University Building [UB] [see map at the back of the schedule]. In Berkeley, registration will take place at the DRBU-Berkeley Office located at 2245 McKinley Ave., Suite B, Berkeley, CA, or by appointment [contact iwr@drbu.org]. You must register in person and pay tuition and fees at the time of registration.

If you are in a degree program

If you have been admitted to a degree program, you must first meet with your advisor to review your progress report. Once you decide on what classes to take, please complete your registration form and have your advisor sign the form. Ukiah undergraduate students with questions about their advisors should contact Bhikshuni Jin Jr [jin.jr@drbu.org]; graduate students should contact Kien Po [kien.po@drbu.org]. Berkeley students should contact iwr@drbu.org.

If you are not in a degree program

If you are not in a degree program and you are a first-time student, please complete a Special Student Application Form, which may be found at the back of this schedule or outside the DRBU Administrative Office at the University Building. You will not need an advisor's signature to register.

If you are a Sangha & Laity Training Program [SLTP] student

If you are an SLTP student, you must first have your advisor [Heng Dzu Shr] review your list of classes and sign your registration form before turning it in to DRBU. SLTP students do not pay the \$30 registration fee.

TUITION & FEES

Admissions Application Fee [one-time]	\$20
Registration Fee for each semester	\$30
Tuition for all Berkeley Students	\$120/unit
Tuition for Ukiah Program Degree Students	\$120/unit
Tuition for Ukiah Program Non-Degree Students	\$30/unit

We accept cash or checks made out to "DRBU." Credit cards are not accepted.

Financial Aid & Work Study

We do not turn students away for lack of funds. Financial aid and work study are available for qualified students. For more information, email admissions@drbu.org.

ADMISSIONS

How do I apply to a DRBU degree program?

If you are interested in applying to a DRBU degree program, please call one of our offices, visit our Web site, or e-mail admissions@drbu.org for more information. Application forms can be downloaded from our Web site [www.drbu.org]. Applications are accepted on a rolling basis.

Academic Calendar

UKIAH

BERKELEY

Spring Semester 2012

Dec 1-2 [2011]	Advising/Registration for Spring 2012
Jan 17	Instruction begins
Jan 17-21	Spring 2012 General/Late Registration
Feb 3	Last day to add/drop classes
Mar 19	Application/Financial Aid deadline for Fall 2012 and Summer Program
Mar 11-17	Guanyin Recitation Session [no academic classes*]
Apr 2	Spring Semester degree conferral application deadline
Apr 20	Last day to change grading option [P/NC ↔ LG → AUD]
Apr 27	Last day to withdraw with a "W"
May 7-11	Finals week
May 10	Last day to turn in thesis
May 11	Last day of academic classes
May 25	Grades due
May 16	DRBU Commencement Ceremony

Dec 1-2 [2011]	Advising/Registration for Spring 2012
Jan 17	Instruction begins
Jan 17-21	Spring 2012 General/Late Registration
Feb 3	Last day to add/drop classes
Mar 19	Application/Financial Aid deadline for Fall 2012 and Summer Program
Mar 11-17	Guanyin Recitation Session [no academic classes*]
Apr 2	Spring Semester degree conferral application deadline
Apr 20	Last day to change grading option [P/NC ↔ LG → AUD]
Apr 27	Last day to withdraw with a "W"
May 7-11	Finals week
May 10	Last day to turn in thesis
May 11	Last day of academic classes
May 25	Grades due
May 16	DRBU Commencement Ceremony

Fall Semester 2012

Aug 20	Orientation for all new degree students [required]
Aug 21	Orientation for all continuing degree students [required]
Aug 21-24	Fall 2012 General Registration
Aug 22	Student Advising [degree students only; by appointment]
Aug 23	Instruction begins
Aug 27-31	Late Registration
Sep 03	Labor Day [no academic classes]
Sep 14	Last day to add/drop classes
Oct 28-Nov 03	Guanyin Recitation Session [no academic classes*]
Nov 05	Fall Semester degree conferral application deadline
Nov 22-25	Thanksgiving Break
Nov 30	Last day to change grading option [P/NC ↔ LG → AUD]
Dec 07	Last day to withdraw with a "W"
Dec 10-14	Early Registration for Spring Semester 2013
Dec 17-21	Final Exams
Dec 21	Last day of academic classes
Dec 23-29	Amitabha Recitation Session
Jan 04 [2013]	Grades due
Dec 30-Jan 20 [2013]	Winter Chan Session

Aug 20-31	Fall 2011 General Registration
Sep 04	Instruction begins
Sept 4-14	Late Registration
Sep 25	Last day to add/drop classes
Oct 28-Nov 03	Guanyin Recitation Session [CTTB; no academic classes]
Nov 05	Fall Semester degree conferral application deadline
Nov 19	Last day to change grading option [P/NC ↔ LG → AUD]
Nov 22-25	Thanksgiving Break [3-day Chan Meditation]
Dec 10-14	Early Registration for Spring Semester 2012
Nov 26	Last day to withdraw with a "W"
Dec 10-14	Early Registration for Spring Semester 2013
Dec 23-29	Amitabha Recitation Session [CTTB; no academic classes]
Dec 21	Last day of academic classes
Jan 04 [2013]	Grades due
Dec 30-Jan 20 [2013]	Winter Chan Session [CTTB; no academic classes]

* With the exception of a special course held in conjunction with the session.

ABBREVIATIONS

General

AUD	Audit
BBM	Berkeley Buddhist Monastery
CTTB	City of Ten Thousand Buddhas
DRBU	Dharma Realm Buddhist University
Intro	Introduction
LG	Letter Grade
P/NC	Pass/No Credit
Sec	Section
TBD	To Be Determined

Courses

AA	Applied Arts
BSP	Buddhist Study & Practice
BUDED	Buddhist Education
CHI	Chinese Studies
COMM	Communication
ENG	English Studies
HS	Humane Sciences
SHAS	Shastra Studies
SKT	Sanskrit Studies
SUT	Sutra Studies

Rooms [CTTB]

ARTS	Arts Studio
2E	Second Floor, East End
BH	Buddha Hall
Conf or CR	Conference Room
DYH	Dao Yuan Hall [Confucius Hall]
ESL Library	North End of Central Hallway, UB
DVGS	Girls' High School
DVBS	Boys' High School
MR	Human Resources Meeting Room
IITBT	International Institute for the Translation of Buddhist Texts
JGH	Joyous Giving House
LC	Learning Center [Computer Lab]
MCOE	Mendocino County Office of Education, 2240 Old River Road, Ukiah, CA 95482
Rm	Room #
SL	Special Location
TM	Tathagata Monastery
UB	University Building [Guest Building]
ULib	University Library

COURSE LISTING FORMAT

Course code	
Course title	
Time[s]	Location
Total # of units/hours	Grading options
Instructor	
Description	

AA 120.78

Tai Ji Quan (Multi-level)

M/Th 5:00 - 6:00 PM IITBT
1 to 2 units LG or P/NC
Bhikshuni Heng Liang

Instruction in the practice and theory of the 13 basic movements of *Tai Ji Quan* as an exercise for improving and maintaining health as well as a form of meditation through movement. The 64 variations of the basic 13 movements will be explained in detail, with an emphasis on the "mind-body" technique for enhancing and directing the flow of *qi*. One new movement will be taught each week. Women only. First class on Feb 9

AA 160.14

Multimedia Design

TBD MCOE
2 units LG, P/NC or AUD
Edwin Kang

This class is a hands-on introduction to the field of digital multimedia, which integrates text, images, graphics, sounds, video, and animation in an interactive computer environment. Students working on design projects will gain specialized knowledge in the emerging discipline of multimedia design. Students will receive in-depth instruction in leading digital image editing, video, and audio editing software, which are used in commercial graphics, video production and multimedia. Students will learn about multimedia technology, terminology, production techniques, and software.

BSP 128

Mantra Practice

Sa 8:00 - 10:00 AM; 3:00 - 5:00 PM BH
0.5 to 1 unit LG or P/NC
Bhikshu Heng Sure; Bhikshuni Heng Syin

Group practice of recitation of the Shurangama Mantra [morning] and the Great Compassion Mantra [afternoon]. Attendance record and journal or final paper required. [morning] and the Great Compassion Mantra [afternoon]. Attendance record and journal or final paper required. Not repeatable for credit.

Ukiah Course Listings

BSP 138.1

Meditation for Beginners

Daily 03/30 - 04/7

BH

1 unit

LG or P/NC

Faculty TBA

Beginner's meditation session during which students comply with the rules of the Chan Hall and follow group-scheduled periods of meditation, walking, and instructions [afternoon and evening lectures]. Attendance record and a journal are the minimum requirements. Any further requirements imposed by the instructor will be made clear to students before the first day of the session.

BSP 148

Ten Thousand Buddhas Repentance Ceremony

Daily 04/22 - 05/13

BH

1 to 3 units

LG or P/NC

Faculty TBD

Group practice of the Ten Thousand Buddhas Repentance Ceremony, including reciting the Sutra text [*The Buddha Speaks of the Ten Thousand Buddhas Sutra*], performing the rituals and bowing to the Buddhas' names in the text. Students may register for 1-3 weeks [1 unit of credit per week]. Full-time attendance is encouraged; minimum 80% attendance and a journal or final report are required for credit.

BSP 148B

Great Compassion Repentance

Daily 12:30 - 1:50 PM

BH

1 to 2 units

LG or P/NC

Bhikshuni Heng Syin

Regular practice of the Dharma of Repentance of the Great Compassion of Guanshiyin [Avalokiteshvara] Bodhisattva with a Thousand Hands and a Thousand Eyes. This practice includes: offering incense and flowers, bowing to Buddhas and Bodhisattvas, reciting the Great Compassion Mantra 21 times, chanting repentance and vows, and dedicating merit and virtue from one's practice to benefit all living beings. Attendance record and journal required.

BSP 158.2A

Guanyin Session

Daily 03/11 - 03/17

BH and UB Conf

1 unit

LG or P/NC

Bhikshuni Heng Je; Douglas Powers

Regular practice of the Dharma of Repentance of the Great Compassion of Guanshiyin [Avalokiteshvara] Bodhisattva with a Thousand Hands and a Thousand Eyes. This practice includes: offering incense and flowers, bowing to Buddhas and Bodhisattvas, reciting the Great Compassion Mantra 21 times, chanting repentance and vows, and dedicating merit and virtue from one's practice to benefit all living beings. Attendance record and journal required.

BSP 158.2B

Guanyin Session for Beginners

Daily 03/11 - 03/17

BH and UB Conf

1 unit

LG or P/NC

Bhikshuni Heng Je; Douglas Powers

A one-week beginner's retreat designed to introduce the daily life at a Mahayana Buddhist monastery and the practice of reciting the name of Guanshiyin Bodhisattva. The course includes instructional talks, walking and sitting recitations of the name of Guanshiyin Bodhisattva, meditation, discussions, and daily ceremonies. Attendance record, practice journal, and/or a final report are required. No prior experience in Buddhist practice necessary.

BSP 168A

Avatamsaka Sutra Recitation

Daily 7:00 - 8:00 AM

BH

1 unit

LG or P/NC

Bhikshu Jin Yan; Bhikshuni Heng Yin

Group practice of the recitation of the *Avatamsaka Sutra*. Attendance record, practice journal, and/or final report are required. Not repeatable.

BSP 273.1

Buddhist Critical Thought

W 1:00 - 4:30 PM

UB Conf

3 units

LG, P/NC or AUD

Douglas Powers

This course aims to help students wrestle with questions raised by Western seminal thinkers from a Buddhist perspective. Students read primary materials from the Buddhist traditions and post-industrial Western philosophers side-by-side and use Buddhist structures and concepts to discuss topics such as existence, roles of the unconscious, and the deterministic effects of culture.

BSP 299

Masters Project

Dates/Times/Locations TBD

1 to 3 units

LG only

MA thesis advisors

This course is designed to guide students writing theses through the writing process. Students will meet with their advisor on a regular basis during the semester to discuss the student's research and writing. A total of six units of master's thesis are required for MA BSP graduation. At least three of these units must be taken as independent study with one's thesis advisor.

BUDED 296

Reflections on Teaching Practice

Dates/Times/Locations TBD

1 unit

LG or P/NC

Susan Rounds

Student teaching or independent study. This course will provide individual coaching and support for classroom teachers. Each teacher will be observed by a support provider three times during the semester. These observations will be followed by conversations between the teacher and support provider focusing on topics such as classroom management, learning environment, effective teaching strategies, and meeting the needs of diverse learners. An Independent Study Syllabus required at registration.

C&R 100

Daily Ceremonies

Daily; see times below

BH

Up to 3 units

LG or P/NC

Bhikshu Heng Sure; Bhikshuni Heng Syin

Any of the following may be taken once only for credit: [1] Morning Recitation [4:00 - 5:00 AM; 1 unit] includes recitation of the Shurangama Mantra, Great Compassion Mantra, Ten Small Mantras, Heart Sutra, and Medicine Master Buddha's name, in Chinese or English on alternate days; [2] High Meal Offering [10:30 - 10:50 AM; 0.5 unit] before and after meal [11:50 - noon]; [3] Evening Recitation [6:30 - 7:30 PM; 1 unit] includes recitation of the Amitabha Sutra and the Eighty-eight Buddhas Repentance on alternate days in Chinese or English, followed by more mantra recitation, and ending with a 20-minute recitation of Amitabha Buddha's name; [4] Mantra Heart [of Shurangama Mantra] recitation and final transference [9:00 - 9:20 PM; 0.5 units].

C&R 110.16

Buddhist Liturgical Instruments

TBD

JGH [Solarium]

1 unit

LG or P/NC

Bhikshuni Heng Liang

Buddhist liturgy in Chinese and English, its basis in Buddhist scholarship and its important role in Buddhist practice. Students will learn the major Mahayana ceremonies, including various chants, music, and ceremonial comportment; students will gain the skill in performing on traditional Buddhist percussion instruments. Bhikshunis and novice nuns only. First class on Feb 9

CHI 105

Introduction to Mandarin Chinese I

M/Th 4:00 - 5:45PM

UB Rm 6

3 units

LG or P/NC

TBD

This course is designed to introduce the syllabic structure and pronunciation of modern standard Chinese [*Han Yu Pin Yin*] to beginners. The basic Chinese writing system, numbers and simple expressions will be covered in this course. Learning methods will include lectures, role playing, presentations, pattern drills, movies, and games.

CHI 106.1

Introduction to Mandarin Chinese II

M/Th 4:00 - 5:45 PM

UB Conf

3 units

LG or P/NC

Min Zhang

This course is designed for continuing beginner students of Chinese. We will use the *pinyin* transliteration system and learn to recognize approximately 160 Chinese words. We will continue to learn to speak, read, and write basic conversational Chinese. Classes will include lectures, grammar pattern drills, presentations, games, and field trips into a Chinese community for real-life practices.

Ukiah Course Listings

CHI 107.1

Intermediate Chinese II

Tu 10:00 - 11:10 AM

UB Rm 8

1 unit

LG or P/NC

Bhikshuni Heng Jiao

This course is designed for students who have a foundation in Chinese. Students are expected to have learned the *pinyin* transliteration system for 2 years and are able to recognize approximately 500 Chinese words. We will continue to learn to speak, read, and write basic conversational Mandarin. The goal of the class is to give students an appreciation of the Chinese language and to offer them the opportunity to further their studies.

CHI 141

Introduction to Classical Chinese

Th 9:40 - 11:00 AM, Th 4:00 - 5:10 PM & TBD UB Rm 8

3 units

LG or P/NC

Bhikshuni Heng Yi

This course is primarily devoted to the study of classical Chinese grammar and includes thoughtful readings, translations of selected texts, and excerpts from the Buddhist canon as well as Chinese classics. Under the guidance of the instructor, students will be able to read the texts line by line and translate them from Chinese to English with the help of dictionaries, reference works, and in-class discussions.

CHI 152P [Lab]

Chinese Orchestra

W 7:30 - 9:30 PM; every other Su 12:30 - 2:30 PM ARTS

1 unit

LG, P/NC, or AUD

Agis Gan

This multi-level course is repeatable as students advanced through the various learning levels. Beginners will be introduced to traditional Chinese instruments and choose an instrument to learn. Intermediate students will join CTTB's Chinese Orchestra. Advanced students who have reached a higher level of proficiency will learn to perform solo pieces. The instruments include Winds: horizontal bamboo flute [笛]; and *sheng* [笙 mouth organ]. Strings: *er-hu* [二胡]; *zhong-hu* [中胡]; and *gao-hu* [高胡]. Plucked strings: *liu-qin* [柳琴]; *pi-pa* [琵琶]; *zhong-ruan* [中阮]; and *gu-zheng* [古箏]. Percussion: *yang-qin* [楊琴] and more. Students will be expected to buy their own instruments within the first two months of class.

CHI 161.1

Selected Chinese Classical Texts

M/F 2:00 - 3:20 PM

UB Rm 6

2 units

LG, P/NC or AUD

John Chu; Yvonne Chu

Learn classical Chinese through the 達摩祖師破相論 and selections from Mencius and the poet, Bai Ju-Yi 白居易詩選. Students will analyze Chinese character formation and classical Chinese phrasing. Through learning classical Chinese, students will learn to appreciate the history and the relationship between the language and the culture. Basic knowledge of Chinese preferred; permission from instructor is required for students with no Chinese knowledge.

ENG 101

Level 1: Beginner ESL

TBD

UB 2E

1 to 5 units

P/NC

Randall Peterson

Speaking, listening, reading, and writing: students learn names and sounds of letters in the alphabet, consonant combinations [digraphs], number words, and writing capital and lowercase letters and words. Students practice reading and writing and are introduced to blending of sounds, punctuation, silent reading, and simple story comprehension. Men only.

ENG 103

Level 3: Intermediate ESL

TBD

UB 2E

1 to 5 units

P/NC

Brooks Hansard

Prerequisite: ESL Level 2 or equivalent

Speaking, listening, reading, and writing: students learn the long vowel sounds and practices listening and reading comprehension through finding main ideas, summarizing content, recognizing implied meaning, developing opinions, and predicting outcomes. Students must master the Laubach Way to Reading Diagnostic Inventory—Student Reading Profile and/or the Laubach Way to Reading Checkup for the preceding Skill Book Level. Men only.

ENG 107

Advanced Academic Reading and Writing

M 1:45 - 2:45 PM; W/Th 1:45 - 3:00 PM UB Conf; UB Rm 6
3 units LG or P/NC
Victoria Patterson

Prerequisite: ENG 106 or instructor's permission
This is the third in a series of three courses for intermediate English language learners. It centers on the development of academic English reading and writing skills as well as providing opportunities to improve oral communication. Focus will be on interpreting texts and improving writing skills.

HS 113 / BSP 270

Islam, Christianity and Buddhism: An Encounter

Tu/W 2:00 - 3:45PM UB Rm 8
3 units LG, P/NC or AUD
Snjezana Akpinar

The course focuses on a study of religiosity through a discussion among three major cultural traditions of today's world. Islam as one of the representatives of the monotheistic Abrahamic traditions, discusses its perspectives on faith with Buddhism and its points of view, as well as with Christianity, a culture that still dominates today's Western world.

HS 170

Introduction to Linguistics:

Language Contact and Language Change

Tu/Th 2:00 - 3:45 PM UB Rm 6; Rm 8
3 units LG or P/NC
Marvin Kramer

The course focuses on a study of religiosity through a discussion among three major cultural traditions of today's world. Islam as one of the representatives of the monotheistic Abrahamic traditions, discusses its perspectives on faith with Buddhism and its points of view, as well as with Christianity, a culture that still dominates today's Western world.

SHAS 100.1

Undergraduate Seminar in Shastra:

The Precious Buddha Recitation Samadhi

F 2:00 - 3:10 PM UB Rm 8
1 unit LG, P/NC or AUD
Bhikshuni Heng Shen

淨土十要之五—念佛寶王三昧論. Among many commentaries written by scholars and patriarchs on the Pure Land sutras and shastra, Great Master Ou-Yi selected ten important texts as the essentials—known as the *Ten Essential Texts of Pure Land School*—of which this is the fifth. The entire Shastra is divided into 20 chapters. The themes that are covered in this text include the development of faith, the importance of practice, and their interrelationship.

SHAS 111.1/260.1

Seminar in Selected Shastras: *The Shastra on the Door to Understanding the Hundred Dharmas*

W 4:30 - 5:40 PM UB Rm 8
1 unit LG, P/NC or AUD
Bhikshuni Heng Je

Continuation of the study the *The Shastra on the Door to Understanding the Hundred Dharmas* [百法明門論]. Analyze each of the conditioned dharmas and learn to apply principles to daily practice. This class includes a pragmatic experience in self-observation. Student will write journals throughout the semester. First class on Feb 8

SHAS 160.3/200.3

Selected Shastras [Evening Lecture]

F 7:30 - 9:00 PM BH
1 unit LG or P/NC
Bhikshu Heng Sure; Bhikshuni Jin Jr

Ongoing evening lecture series. Attendance, class notes, and a final report are required.

SKT 110

Beginning Sanskrit

Tu 8:00 - 9:30 AM; Th 8:00 - 10:00AM UB Rm 6
3 units LG, P/NC or AUD
Barbara Waugh

This is the second in a series of four classes in which students will learn to read, recite and translate Sanskrit, the original language of Buddhist texts. In this class, students will learn the Sanskrit script, sound system, and the history of the Sanskrit language. In addition, they will learn how to use a Sanskrit dictionary. Students will gain a basic overview of Sanskrit grammar, learn how to identify, and analyze words, and understand how they are used in a sentence. Readings will be from the *Heart Sutra* and samples from Sanskrit epic literature.

Ukiah Course Listings

SKT 120

Intermediate Sanskrit

W 3:00 - 5:00 PM; F 9:00 - 11:00 AM UB Rm 6

3 units LG, P/NC or AUD

Barbara Waugh

Prerequisite: SKT 110 or instructor permission

This is the third in a series of four classes in which students will learn to read, recite, and translate Sanskrit, the original language of Buddhist texts. In this class students will expand their knowledge of the formation of Sanskrit verbs, nouns and particles. They will learn to understand more complex Sanskrit sentences and to analyze different types of Sanskrit compounds. Students will learn to use a variety of reference resources and will learn about the history of Sanskrit Buddhist texts. Students will read the first half of the *Amitabha Sutra* and will draw on comparison with the Chinese. They will continue to explore Sanskrit epic literature. Students must have completed Sanskrit 101 and 110 or the equivalent or have the permission of the instructor.

SUT 120.15/220.15

Shurangama Sutra [Evening Lecture]

Tu 7:30 - 9:00 PM

BH

1 unit

LG or P/NC

Bhikshuni Heng Je

Ongoing evening lecture series. Attendance, class notes, and a final report are required.

SUT 150.18/250.18

Dharma Flower [Lotus] Sutra [Evening Lecture]

M 7:30 - 9:00 PM

BH

1 unit

LG or P/NC

Bhikshu Jin Fan; Bhikshuni Heng Yin

Ongoing evening lecture series. This semester, the course will provide a detailed study and analysis of chapters 16-17. Chinese with English translation. Attendance, class notes, and a final report are required.

SUT 160.8/260.8

Vajra Sutra [Evening Lecture]

Su 7:30 - 9:00 PM

BH

1 unit

LG or P/NC

Bhikshu Heng Sure

Ongoing evening lecture series on the *Vajra Sutra*. Attendance, class notes, and a final report are required.

SUT 170.11/270.11

Avatamsaka Sutra: Pure Conduct Chapter

[Evening Lecture]

W 7:30 - 9:00 PM

BH

1 unit

LG or P/NC

Bhikshu Heng Shun; Bhikshuni Heng Je

Ongoing evening lecture series on the *Avatamsaka Sutra*, Chapter 11, "Pure Conduct." Attendance, class notes, and a final report are required.

SUT 170.39F/270.39F

Avatamsaka Sutra: Entering the Dharma Realm

[Evening Lecture]

Th 7:30 - 9:00 PM

BH

1 unit

LG or P/NC

Bhikshuni Heng Yin

Ongoing evening lecture series on the *Avatamsaka Sutra*, Chapter 39, "Entering the Dharma Realm." Attendance, class notes, and a final report are required.

SUT 180.9/280.9

Shurangama Sutra Seminar:

The Successive Stages to Awakening

F 3:30 - 6:20 PM & TBD

UB Conf

3 units

LG, P/NC or AUD

Bhikshuni Heng Je

Ongoing course that continues to examine in details the successive stages of a practitioner's progress. In order to cultivate the samadhi of a Buddha, one has to start from the initial cause of distorted thinking. By going through three gradual steps, one can put to rest such delusion. Practitioners apply both concentration and wisdom sequentially to deepen their samadhi, leaving external objects behind and to illuminate the nature. We will examine the fifty-five stages of cultivation that a sage must experience. This is a wondrous and magnificent Path, the unique portal through which the Buddhas in all ten directions have passed through to transcend the conditioned world. First class on Feb 10

TRANS 150.1/250.1

Canonical Text Translation: Avatamsaka Sutra

M 8:30 - 10:15 AM UB LC
 2 units LG, P/NC or AUD
 Bhikshu Heng Sure; Bhikshuni Heng Yi

Ongoing translation of the *Avatamsaka Sutra*, with instruction on methods and resources for the translation of sutra texts. The class will focus on translation from Buddhist Chinese into English, with consideration of Sanskrit meanings when available. We will investigate precedents set by historical translators and integrate contemporary perspectives, including a variety of texts and commentaries as we continue to refine our translation of the Sutra.

TRANS 299

Master's Project

Dates/Times/Locations TBD
 1 to 3 units LG only
 MA thesis advisors

This course is designed to guide students with their theses through the writing process. Students will meet with their advisor on a regular basis during the semester to discuss the student's research and writing progress. A total of six units of master's thesis are required for a MATLS graduation. At least three of these units must be taken as independent study with one's thesis advisor.

VIN 111.12

Laity Precepts

Tu 2:50 - 4:00 PM UB Conf
 1 unit LG, P/NC, or AUD
 Bhikshuni Heng Jyu

Practical instructions on the rules of deportment by which the Buddhist laity conduct themselves in the monastery. The class includes study of the basic common Buddhist terminology and the Pratimoksha Code which applies to laity, as well as guidance on how to be worthy representatives of the Proper Dharma. This is a beginner's class for lay women only.

VIN 112.13

Shramanerika Precepts

Tu 8:50 - 10:10 AM; F 4:00 - 5:30 PM JGH [Solarium]
 3 units LG, P/NC or AUD
 Bhikshuni Heng Rang

The study of texts explaining the "Shramanerika's Ten Precepts" and deportment. Lectures will include the causes and conditions of how the precepts came about as well as their applications to daily life. Novice nuns only.

VIN 122.15

Bodhisattva Precepts

M 2:50 - 4:00 PM UB Conf
 1 unit LG, P/NC or AUD
 Bhikshuni Heng Shen

Prerequisite: Students must have received the Five Precepts. In this class, we will compare the differences between the *Brahma Net Sutra* and the *Yogacharabhumi Shastra*. We will categorize the precepts according to the Six Paramitas: giving, upholding precepts, patience, Chan, vigor, and wisdom and the Four Gatherings: giving, kind words, similar matters, and beneficial conduct. There will be explanations with lectures that cover exceptions, "stopping," upholding, and violations of the precepts. The class will be taught in both English and Chinese.

VIN 135.4/260.4

Lives of the Patriarchs

Sa 2:00 - 3:00 PM BH
 1 unit LG or P/NC
 Bhikshu Heng Sure; Bhikshuni Heng Tyan

Ongoing Saturday afternoon lecture series on the lives of the patriarchs. Attendance, class notes, and a final report are required.

VIN 180.2

Bhikshuni Precepts

M/W 8:00 - 9:45 AM JGH [Solarium]
 3 units LG, P/NC or AUD
 Bhikshuni Heng Rang

The study of texts explaining the Bhikshuni's Precepts and deportment. Lectures will include the causes and conditions of how the precepts came about as well as their application to daily life. Bhikshunis only.

Berkeley Course Listings

ABBREVIATIONS

General

AUD	Audit
DRBU	Dharma Realm Buddhist University
LG	Letter Grade
P/NC	Pass/No Credit
TBD	To Be Determined

Courses

AA	Applied Arts
BSP	Buddhist Study & Practice
C&R	Ceremony and Ritual
SHAS	Shastra Studies
SKT	Sanskrit Studies
SUT	Sutra Studies

Rooms

BBM	Berkeley Buddhist Monastery
BBM Lib	BBM Library
BBM BH	BBM Buddha Hall
BBM Din	BBM Dining Hall
CTTB	City of Ten Thousand Buddhas
GTU	Graduate Theological Union
IWR	Institute for World Religions

COURSE LISTING FORMAT

Course code	
Course Title	
Time[s]	Location
Total # of units/hours	Grading options
Instructor	
Description	

AA 125.7

Qigong & Classical Yoga

M 7:30 - 9:00 PM
1 unit
Amelia Barili

BBM Din
P/NC

Traditional Taoist and Yogic healing techniques to cultivate unity of mind and body and blissful clarity, as well as to awaken your inner healer.

BSP 138.14

The Traditional Context of Buddhist "Mind Training"

W 7:30 - 9:00 PM
1 unit
Steven Tainer

BBM BH
LG or P/NC

Ongoing instruction in "calm abiding" [*shamatha*] and "insight" [*vipashyana*] practice, supplemented by five sets of basic "View" topics and five Practices drawn from traditional methods and emphases. Each meeting will include time for shamatha practice and discussion, plus either a View topic or a Practice supplement. Discussions of supplements will include both their place in the main schools of Buddhism and associated literature, and their meaning and relevance to the overall theory and practice of Buddhism in contemporary life.

BSP 138.1

Meditation for Beginners

Daily 03/30 - 04/7
1 unit
Faculty TBD

BH and UB Conf [CTTB]
LG or P/NC

Beginner's meditation session during which the student complies with the rules of the Chan hall and follows the group scheduled periods of meditation, walking, and instruction [evening and afternoon lectures]. Attendance record and a journal are the minimum requirements. Any further requirements imposed by the instructor will be made clear to students before the first day of the session.

BSP 138.2

Daily Chan Meditation

Daily 6:15 - 7:15 AM; 5:15 - 6:15 PM BBM BH
1 unit LG or P/NC
Bhikshu Heng Sure

Two periods daily [one hour each] of formal Chan meditation. The fourth Saturday of the month, an intensive retreat is additionally held. Instructions and guidance may be provided upon request. The goal of this practicum course is to provide the student with one of the pillars of Buddhist practice, aiming at enhancing concentration and mindfulness. Doug Powers will meet with enrolled students to discuss their practice every other Monday from 6:15 - 6:30 PM at BBM. Marty Verhoeven will also be available to meet with practicum students Friday from 6:15 - 6:30 PM. One unit for every 45 hours of practice.

BSP 148

Ten Thousand Buddhas Repentance Ceremony

Daily 04/22 - 05/13 BH [CTTB]
1 to 3 units LG or P/NC
Faculty TBD

Group practice of the Ten Thousand Buddhas Repentance Ceremony, including reciting the Sutra text [*The Buddha Speaks of the Ten Thousand Buddhas Sutra*], performing the rituals and bowing to the Buddhas' whose names appear in the text. Students may register for 1-3 weeks [1 unit of credit per week]. Full time attendance is encouraged; minimum 80% attendance and a journal or final report are required for credit.

BSP 158.2A

Guanyin Session

Daily 03/11 - 03/17 BH and UB Conf [CTTB]
1 unit LG or P/NC
Bhikshuni Heng Je; Douglas Powers

Recitation of the Universal Door Chapter of the *Lotus Sutra* and selected chants, followed by walking and sitting recitation of the name Guanyin Bodhisattva and daily evening instructional talks on the practice of Guanyin Bodhisattva. Record of full attendance, practice journal, and or a final report are required. Any additional requirements imposed by the instructor will be made clear to students on the first day of the session. Not repeatable for credit.

BSP 158.2B

Guanyin Session for Beginners

Daily 03/11 - 03/17 BH and UB Conf [CTTB]
1 unit LG or P/NC
Bhikshuni Heng Je; Douglas Powers

A one-week beginner's retreat designed to introduce the daily life at a Mahayana Buddhist monastery and the practice of reciting the name of Guanyin Bodhisattva. The course includes instructional talks, walking and sitting recitation, meditation, *Tai Ji* exercises, discussion sessions, and daily ceremonies. Record of full attendance, practice journal, and/or a final report are required. No prior experience in Buddhist practice necessary.

BSP 273.2

Buddhist Critical Thought

Every other M 7:30 - 9:30 PM BBM Din
1 unit LG, P/NC or AUD
Douglas Powers

This course aims to help students wrestle with questions raised by Western seminal thinkers from a Buddhist perspective. Students read primary materials from the Buddhist traditions and post-industrial Western philosophers side-by-side and use Buddhist structures and concepts to discuss topics such as existence, roles of the unconscious, and the deterministic effects of culture.

BSP 299

Masters Project

Dates/Times/Locations TBD
1 to 3 units LG only
MA thesis advisors

This course is designed to guide students writing theses through the writing process. Students will meet with their advisor on a regular basis during the semester to discuss the student's research and writing. A total of six units of master's thesis are required for MA BSP graduation. At least three of these units must be taken as independent study with one's thesis advisor.

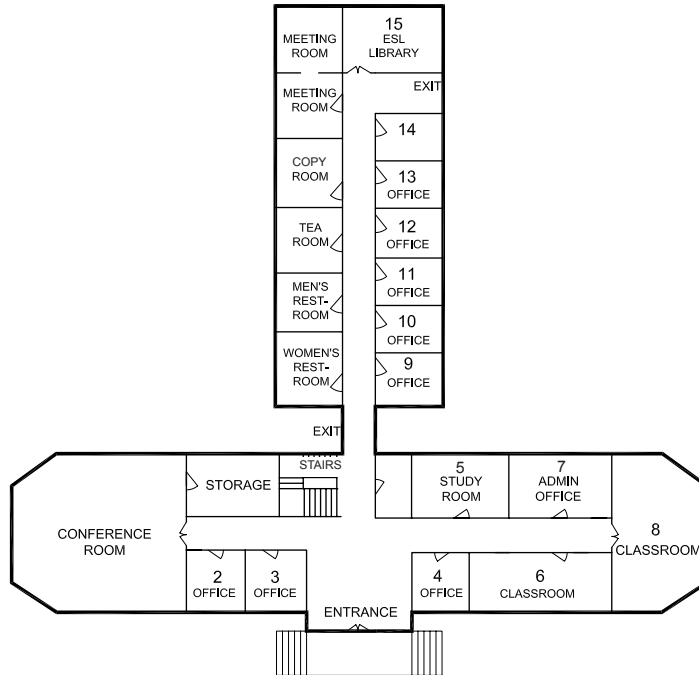
Spring Semester 2012

Ukiah Weekly Schedule

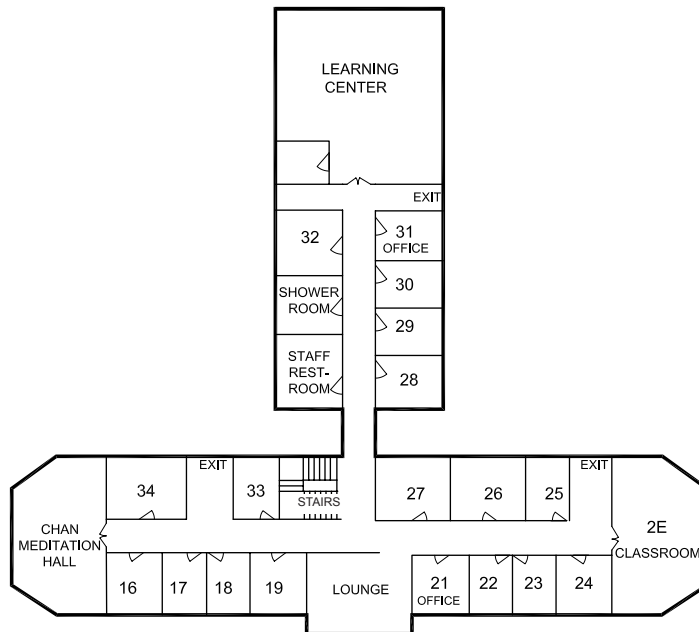
TIME 時間	MONDAY 星期一	TUESDAY 星期二	WEDNESDAY 星期三	THURSDAY 星期四	FRIDAY 星期五	SATURDAY 星期六	SUNDAY 星期日	
4:00 - 5:00	Morning Recitation 早課 C&R 100 [1 unit, may be taken only once for credit]							
5:00 - 6:00	Universal Bowing 拜願 BSP 148A [1 unit]							
6:00 - 7:00	Meditation 打坐 BSP 138 [variable units]							
7:00 - 8:00	Avatamsaka Sutra Recitation 翻華嚴經 BSP 168 A [1 unit]							
Morning	<p>Canonical Text Translation: Avatamsaka Sutra, TRANS 150.1/250.1, 2 units, H Sure/H Yi, 8:30-10:15, UB LC</p> <p>Beginning Sanskrit, SKT 110, 3 units, B Waugh, 8:00-9:30, UB Rm 6</p> <p>Intermediate Chinese II, CHI 107.1, 1 unit, H Jiao, 10:00-11:10, UB Rm 8</p>	<p>Beginning Sanskrit, SKT 110, 3 units, B Waugh, 8:00-10:00, UB Rm 6</p> <p>Introduction to Classical Chinese, CHI 141, 3 units, H Yi, 9:40-11:00, UB Rm 8</p>	<p>Intermediate Sanskrit, SKT 120, 3 units, B Waugh, 9:00-11:00, UB Rm 6</p> <p>Mantra Practice, BSP 128, 0.5-1 unit, H Sure/H Syn, 8:00-10:00, BH</p>					
10:30 - Noon	High Meal Offering / Three Refuges 上供 / 三皈依 C&R 100 [0.5 unit, may be taken once only for credit]							
12:30 - 2:00	Great Compassion Repentance 大悲懺 BSP 148 B [1-2 units]							
Afternoon	<p>Selected Chinese Classical Texts, CHI 161, 2 units, John Chu/Yvonne Chu, 2:00-3:20, UB Rm 6</p> <p>Advanced Academic Reading and Writing, ENG 107, 3 units, V Patterson, 1:45-2:45, UB Conf</p> <p>Bodhisattva Precepts, VIN 122.15, 1 unit, H Shen, 2:50-4:00, UB Conf</p> <p>Tai Ji Quan [Multi-level], AA 120.7, 1-2 units, H Liang, 5:00-6:00, IITBT</p> <p>Introduction to Mandarin Chinese II, CHI 106.1, 3 units, M Zhang, 4:00-5:45, UB Conf</p>	<p>Islam, Christianity and Buddhism: An Encounter, HS 113/BSP 270, 3 units, S Akpinar, 2:00-3:45, UB Rm 8</p> <p>Language Contact and Language Change, HS 170, 3 units, M Kramer, 2:00-3:45, UB Rm 6</p> <p>Laity Precepts, VIN 111.12, 1 unit, H Jyu, 2:50-4:00, UB Conf</p>	<p>Advanced Academic Reading and Writing, ENG 107, 3 units, V Patterson, 1:45-3:00, UB Rm 6</p> <p>Islam, Christianity and Buddhism: An Encounter, HS 113/BSP 270, 3 units, S Akpinar, 2:00-3:45, UB Rm 8</p> <p>Buddhist Critical Thought, BSP 273.1, 3 units, D Powers, 1:00-4:30 UB Conf</p> <p>Seminar in Selected Shastras: The Shastra on the Door to Understanding the Hundred Dharmas, SHAS 111.1/260.1, 1 unit, H Je, 4:30-5:40, UB Rm 8</p> <p>Intermediate Sanskrit, SKT 120, 3 units, B Waugh, 3:00-5:00, UB Rm 6</p> <p>Chinese Orchestra, CHI 152P/labj, 1 unit, A Gan, 7:30-9:30, ARTS</p>	<p>Advanced Academic Reading and Writing, ENG 107, 3 units, V Patterson, 1:45-3:00, UB Rm 6</p> <p>Language Contact and Language Change, HS 170, 3 units, M Kramer, 2:00-3:45, UB Rm 8</p> <p>Introduction to Classical Chinese, CHI 141, 3 units, H Yi, 4:00-5:10, UB Rm 8</p> <p>Tai Ji Quan [Multi-level], AA 120.7, 1-2 units, H Liang, 5:00-6:00, IITBT</p> <p>Introduction to Mandarin Chinese I, CHI 105, 3 units, TBD, 4:00-5:45, UB Rm 6</p>	<p>Selected Chinese Classical Texts, CHI 161, 2 units, John Chu/Yvonne Chu, 2:00-3:20, UB Rm 6</p> <p>Undergraduate Seminar in Shastra: The Precious Buddha Recitation Samadhi, SHAS 100.1, 1 unit, H Shen, 2:00-3:10, UB Rm 8</p> <p>Shurangama Sutra Seminar: The Successive Stages to Awakening, SUT 180.9/280.9, 3 units, H Je, 3:30-6:20, UB Conf</p>	<p>Lives of the Patriarchs, VIN 135.4/260.4, 1 unit, H Sure/H Tyan, 2:00-3:00, BH</p> <p>Mantra Practice, BSP 128, 0.5-1 unit, H Sure/H Syn, 3:00-5:00, BH</p>		
6:30-7:30	Evening Recitation 晚課 C&R 100 [1 unit, may be taken once only for credit]							
7:30-9:00	<p>Dharma Flower [Lotus] Sutra 法華經, SUT 150.18/250.18, 1 unit, J Fan/H Yin, BH</p>	<p>Shurangama Sutra 楞嚴經, SUT 120.15/220.15, 1 unit, H Je, BH</p>	<p>Avatamsaka Sutra: Pure Conduct 翻華嚴經淨行品, SUT 170.11/270.11, 1 unit, H Shun/H Je, BH</p>	<p>Avatamsaka Sutra: Entering the Dharma Realm 華嚴經三十九品, SUT 170.39F/270.39F, 1 unit, H Yin, BH</p>	<p>Selected Shastras, SHAS 160.3/200.3, 1 unit, H Sure/Jr, BH</p>	<p>Guest Speakers H Jiao, BH</p>	<p>Vajra Sutra, SUT 160.8/260.8, 1 unit, H Sure, BH</p>	
9:00-9:20	Mantra Heart/Final Transference 咒心/回向 C&R 100 [0.5 unit may be taken once only for credit]							

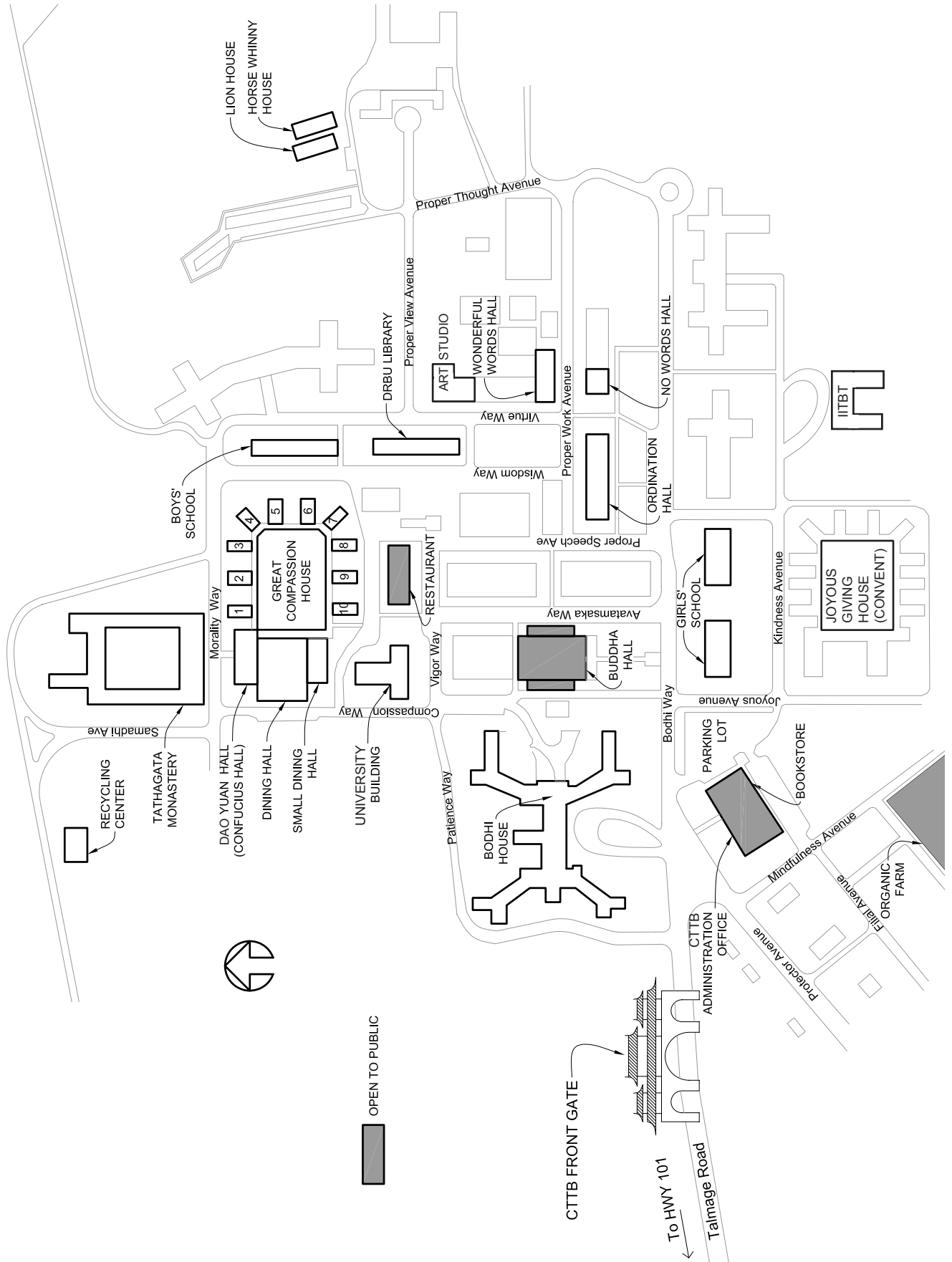
University Building Floor Plans

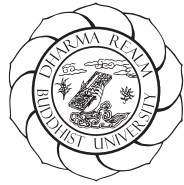
First Floor



Second Floor







www.drbu.org

DHARMA REALM BUDDHIST UNIVERSITY

Special Student [non-degree] Application Form 選修生報名表

SEMESTER 學期

YEAR 年份

STUDENT NUMBER 修生號碼

This application should be submitted to the DRBU Administration Office.

Please use a dark pen and print all entries.

請填妥此報名表,再交回法大辦公室。請用深色原子筆,用正楷英文填寫清楚。

LAST NAME 姓

FIRST NAME 名

MIDDLE INITIAL

OTHER NAME[S] 其它名號

STREET ADDRESS 街牌地址

CITY 城市

STATE 州

ZIP 郵區

PHONE 電話

EMAIL 電子郵區

DATE OF BIRTH 生日

MALE 男

FEMALE 女

DRIVER'S LICENSE # 駕照號碼

or 或 IDENTIFICATION [CARD] # 身份證

ARE YOU A CITIZEN OF THE USA 是否美國籍?

YES 是

NO 否

IF NO, WHAT IS YOUR HOME COUNTRY 若否, 您的國籍?

WHAT IS YOUR VISA STATUS 來美簽證種類?

ARE YOU APPLYING FOR FINANCIAL AID TO COVER ALL OR PART OF YOUR TUITION AND FEES 是否申請全額或部份獎學金?

YES 是

NO 否

NAME OF PERSON TO CONTACT IN CASE OF EMERGENCY 緊急情況通知人姓名

RELATIONSHIP 關係

PHONE 電話

ADDRESS 地址

PLEASE LIST THE LAST HIGH SCHOOL OR COLLEGE YOU ATTENDED 最後上過之高中或大學。

NAME 校名

LOCATION 地點

DEGREE 學位

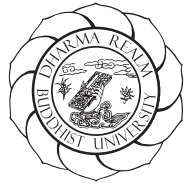
DATES ATTENDED 就讀日期

I certify that the above statements are true and accurate 本人保證以上資料屬實。

APPLICANT'S SIGNATURE 申請人答名

DATE 日期

This form is only required of DRBU non-degree students and SLTP students. 此部分由法大正規生和僧伽居士訓練班學生填寫。



www.drbu.org

Dharma Realm Buddhist University

City of Ten Thousand Buddhas
4951 Bodhi Way
Talmage, CA 95482
707 462 5486
info@drbu.org
www.drbu.org

DRBU Berkeley

Institute for World Religions
2245 McKinley Avenue, Suite B
Berkeley, CA 94703
510 848 9788
iwr@drbu.org
www.drbu.org